



OWNER'S MANUAL

AXN-8706

7" Portable LCD TV

It is important to read this user manual prior to using your new product for the first time.

Contents

A. Setup	3
B. Unit and Remote View.....	5
C. Basic and Operation.....	7
D. Specification.....	11
E. Troubleshooting.....	12

A. Setup

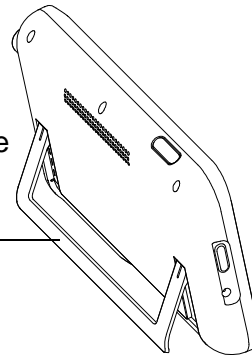
Features

- 7" Portable LCD TV
- Built-in ATSC TV Tuner
- Stereo Sound with Headphone Jack
- Built-in Digital Media Player
- Support Memory Cards (SD/MMC/Memory Stick) and USB 2.0 port
- Built-in rechargeable Lithium-Polymer battery

Package Contents

- 7" Portable ATSC TV
- AC Adapter
- Remote Control
- Instruction Manual
- External Antenna
- Car Adapter*

***Note:** Power on can not charge, only charge when the portable is off.



Place your portable TV

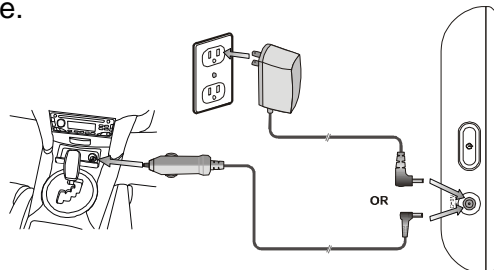
Flip the back stand to place the portable TV on a flat surface.

Power your portable TV

Using the supplied AC adapter, connect the TV's DC 9V socket to a wall outlet.

Using the vehicle adapter, connect the TV's DC 9V socket to a vehicle's lighter socket.

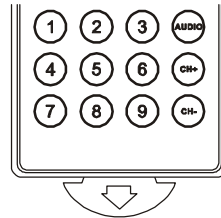
To use battery power, turn the TV OFF and charge the built-in battery for about 4 hours or until the Charge Indicator goes out. Charge the built-in battery for at least 8 hours before using the TV for the first time.



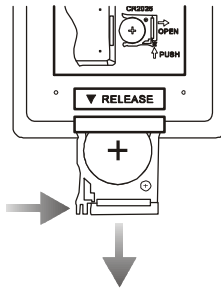
Notes: The Charge Indicator lights red during charging, and goes out when the battery is fully charged.
Both AC power and vehicle power can be used for charging the built-in battery.
When fully charged, the TV can operate about 120 minutes in TV mode.

Use the remote

Your remote comes with a battery installed. Remove the plastic tab before using the remote.



When the battery is low, replace it with another CR2025 3V battery. The positive (+) side faces the back of the remote.



Press the tab and pull to slide out the tray.

Battery Notes:

- Dispose of batteries promptly and properly. Do not burn or bury them.
- Use only fresh batteries of the required size and type.
- If you do not plan to use the remote control for a long time, remove the battery. Batteries can leak chemicals that can damage electronic parts.
- Keep button-cell batteries away from children. Swallowing them can be fatal.

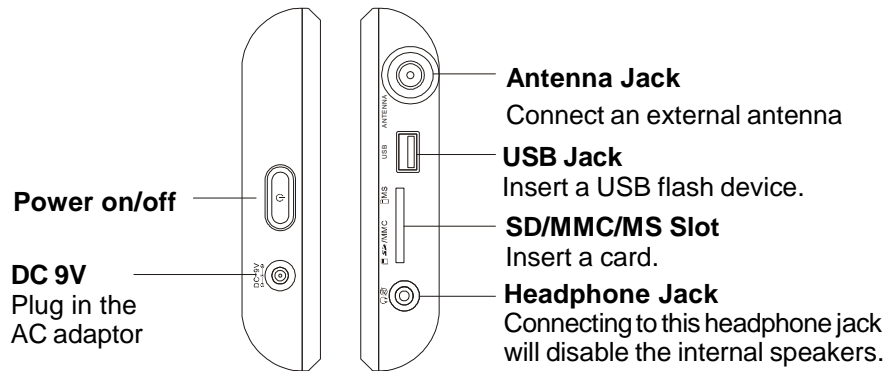
Enjoy the portable TV

1. Press ϕ 2 seconds to turn on the TV. The Power Indicator lights green.
2. Press INPUT on remote control to select TV mode.
3. Press CH+ and CH- to select the previous or next channel.

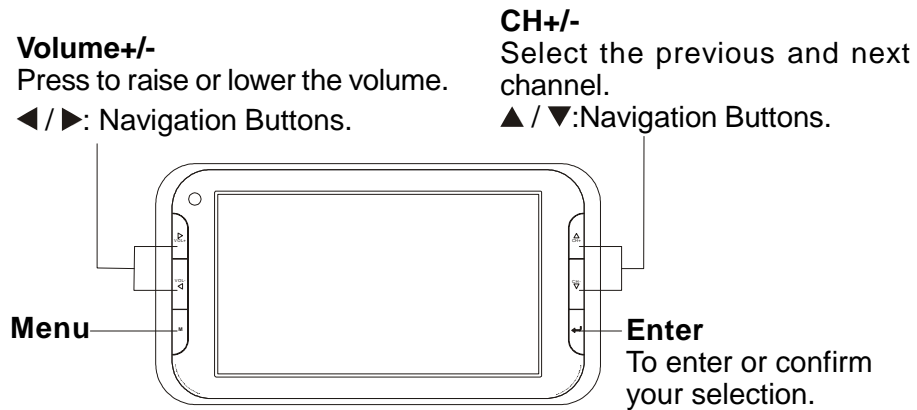
Note: You must scan for available digital channels when you set up your TV. If you do not scan for channels, the CH+ and CH- buttons will not function.

B. Unit and remote View

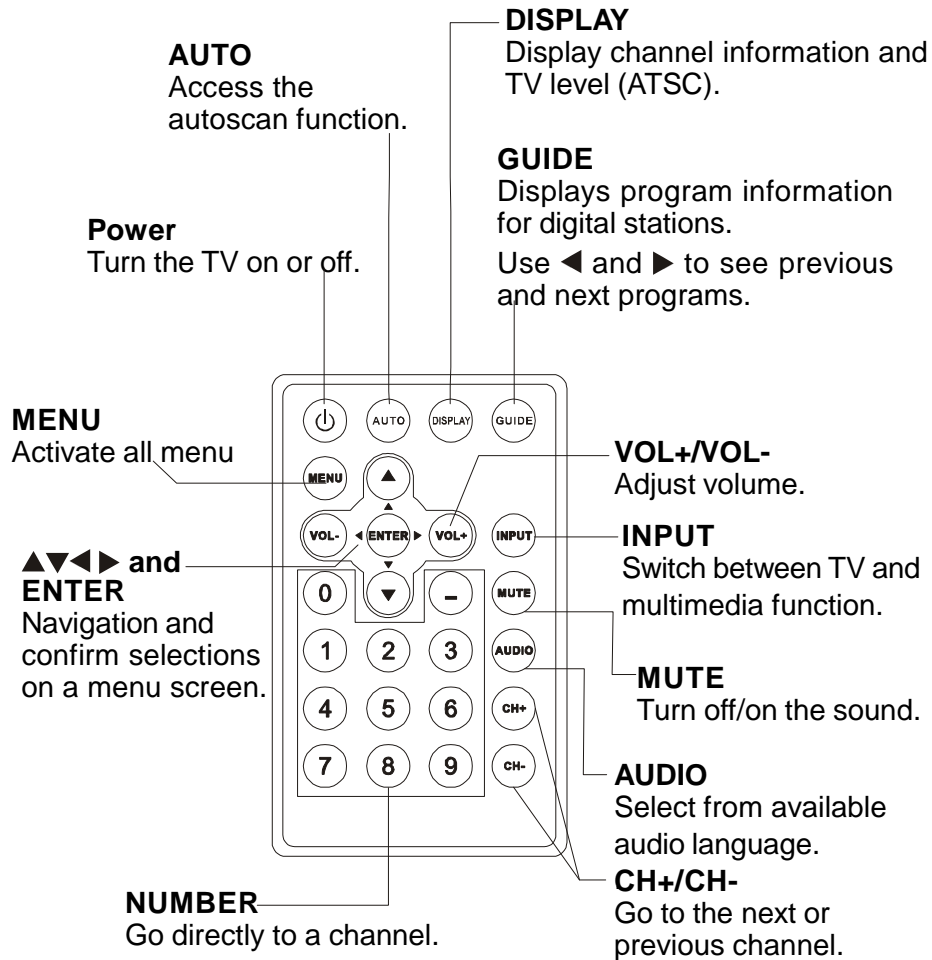
Left and right side



Back side



Remote Control



C. Basic and Operation

Accessing and Changing System Settings

1. Press ◀ or ▶ to access the settings then press ▲ and ▼ to select a setting. Press MENU to go back to the upper menu level.
2. When finished, press MENU to exit the setup menu.

Settings

In the main menu, press ◀ or ▶ to select Settings, press ENTER to complete the settings, and press the MENU to return.

Settings mode allows you to change **Language, Set Color, Set Menu, Set Slideshow, Info, Reset and Update Software**. Press ▲ and ▼ to select, and press MENU to return.

Language: English, French, Spanish. Menu language options.

Set color: Set Contrast, Set Brightness, Set Saturation.

Set Menu: In Set Menu, press ▲ and ▼ to set **Menu Rise Effect** and **Menu view**. **Menu Rise Effect** can be set as Straight Style or Whirl Style. **Menu View** can be set as level view, Over looking View, or Look up View.

Set Slideshow: In Set Slideshow, adjust the Transition Effect, Fit to Display and Duration.
Transition Effect includes styles, such as Alpha Fade, Cube, Drop, Flip Bar, Flip Square, Magic Cube, Score Board, Swap, iPhone, Photo, Sequential, Random;
Fit to Display includes Fit To Long, Fit To Short, Fit To Both;
Duration includes Fast (1 Sec), Normal (10 Sec), Slow (100 Sec) or OFF.

Info: Firmware information.

Reset: Restores the factory settings.

Update Software: SD/MMC/USB Update.

DTV

In main menu, press ◀ ▶ key to select DTV feature, press ENTER key to enter DTV menu. If there is program, it will play interface directly.

Press CH+/CH- key to change other channel, and press ◀ ▶to adjust the volume.

In the main menu of DTV mode, press ◀▶ key to enter **PICTURE** interface. Adjust settings of **Picture Mode, Contrast, Brightness, Sharpness, Tint, Color, Color Mode, Zoom Mode.**

Press ▲▼ to move the cursor.

Press ◀▶ key to confirm selection and press MENU key to return.

Return

Press ◀ ▶ to select **Return** and press ▲ ▼ to move the cursor then press ENTER to go back the main menu.

Channel Setup (TV only)

In the Channel interface of DTV,check the present interface information and the signal quality. Choose **Auto Scan** to search for programs again by air or cable and you can press ENTER on remote control or unit to autoscan TV channel too.

Setup

The Setup of DTV mode includes the Settings of MENU Language, Transparent, OSD Time Out, Closed Caption, Restore Default and **return to Main Menu.**

Press ▲ ▼ to move the cursor, press ◀ ▶ key to select, and press MENU key to return.

Time

In the main menu of DTV, press ◀ ▶ Key to select **Time** function, and press MENU to return.

Use the ◀ ▶ key to complete the settings of **Sleep Timer, Time zone, DST(Daylight saving time), Time Format.**

Press ▲ ▼ to move the cursor,choose, press ◀ ▶ key to confirm selection and press MENU to return.

Audio

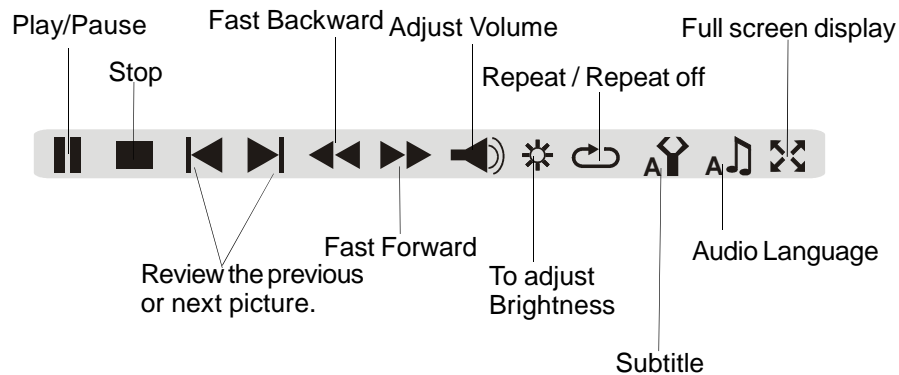
In the main menu of DTV, Press ▲ ▼ key to select Audio, Adjust **Audio language** and **Balance.** Press ▲ ▼ key to choose, press ENTER to confirm, and press MENU to return.

Video

In the main menu, press ◀ ▶ to select Video feature, press ENTER to confirm or press MENU to return.

The window of Video displays all the present movie file list.

Press ▲ ▼ to select a movie, press ENTER to play the movie, and press MENU to return. The Toolbar will be displayed when Video playing press ◀ ▶ to Select related functions.



Browse

In the main menu, press ◀ ▶ to select Browse function.

Press ENTER to enter Browse mode, and press MENU to return.

In Browse mode, all present pictures, music, video files and folders are displayed. Press ENTER to browse the file, and press MENU key to return.

you can set the open screen logo according to your interest:

Select one photo which you desire and press MENU to display toolbar (as below). Press the second icon then will display “**Are You Sure to Set This Photo to the Logo?**”. you can select “Yes” or “No” to set or not to set.

In settings mode select **Reset** back to original setting.



D. SPECIFICATIONS

Signal System.....	ATSC
Panel size.....	7 Inch
Power Supply.....	DC 9V 1A
Remote battery.....	CR2025 3V, 150 mAh
Operating temperature.....	41~95°F(5~35°C)
Dimensions (W x H x D).....	8.66 x 1.154 x 4.77 inch
Weight.....	0.959 lb

E. Troubleshooting

Problem	Solution
The TV won't turn on	<ul style="list-style-type: none">• Charge the battery.• Check that the AC power cord is properly connected.• Test the power outlet by plugging in another appliance. If the outlet does not work, connect the TV to another power outlet.• Your AC Adapter's center tip must be set to positive and its plug must fit the Portable TV's DC 9V jack. The supplied AC adapter meets these specifications.
Poor picture	<ul style="list-style-type: none">• Move to a window (if inside a structure).• Use an external antenna.• Move your portable TV away from other appliances that cause interference.• Make sure the TV and connected antenna are in a fixed position and not used within a moving vehicle.
No sound	<ul style="list-style-type: none">• Turn up the volume.• Press MUTE on the remote to turn off mute.• Unplug the headphones.
Widescreen doesn't work	<ul style="list-style-type: none">• Some DTV stations include the side bars on their broadcast to preserve their screen format. This is normal.

America Action, Inc. (“AXN”) Product Warranty Information

What the warranty covers:

America Action, Inc. (“AXN”) warrants your AXN products against defects in material and workmanship during the warranty period from the original date of purchase, subject to the following terms and conditions. If a product proves to be defective in material or workmanship during the warranty period, AXN will, at its discretion, repair or replace the product with a similar product provided the purchaser adheres to certain return authorization procedures and guidelines.

How long the warranty is effective:

AXN products are warranted for one (1) year for parts and ninety (90) days for labor, starting from the original date of purchase/invoice.

What brand(s) can be covered under the warranty:

Any “ACTION” and “AXION” branded products sold by America Action, Inc.

Whom the warranty protects:

The warranty is valid only for the original purchaser within the continental of USA.

What the warranty does not cover:

1. Any product on which the serial number has been defaced, modified or removed.
2. Damage, deterioration or malfunction resulting from:
 - A. Accident, misuse, neglect, fire, water, lighting, or other acts nature, unauthorized product modification, or failure to follow instructions supplied with the product.
 - B. Repair or attempted repair by anyone not authorized by AXN.
 - C. Any damage of the product due to shipment.
 - D. Removal from or installation to the product.
 - E. Causes external to the product, such as electric power fluctuations or failure.
 - F. Use of supplies or parts not meeting AXN’s specifications.
 - G. Normal wear and tear.
 - H. Battery Leakage.
 - I. Any other cause which does not relate to a product defect.

3. Cosmetic damage by purchaser, such as markings, discoloration, scratches, dents, gouges or any other defacement.
4. Physically damaged products by purchaser, such as broken PCB, Housing, damaged LCD Module.
5. No Defect Found (product returned to AXN as defective but failure is not duplicated by AXN's test method).
6. Customer instruction, installation, set up adjustments, or signal reception problems.
7. Rechargeable batteries.
8. Product without proof of purchase. (The proof of purchase should be one of the following documents: purchase receipt, gift receipt, sales invoice, and packing list that contains the product model number, price, vendor, and purchase date.)
9. Ninety (90) days after the original purchase date of the AXN product, the customer is responsible for the shipping fees incurred for the product delivery to and from AXN service center.

How to get service:

1. For additional information on obtaining an extended warranty service, contact your AXN dealer or AXN's Customer Service Department by e-mailing to customerservice@axionzone.com

To obtain warranty service, you will be required to do one of the following: fill out an online [RMA Request Form](#), print the form, fill it out and fax it to 1-909-869-5545, or call AXN's Customer Service number at 1-888-210-9483. You will be asked to provide the following information:

- A. Customer information (name, day-time phone number, and/or residential address).
 - B. Proof of your purchase (purchase receipt, gift receipt, sales invoice, and/or packing list).
 - C. Product model number.
 - D. Product serial number.
 - E. A description of the problem.
 - F. Payment information (If any payment is required, you will be asked to provide this information beforehand. Currently, we only accept personal check, money order or cashier's check.
The time for us to clear a personal check is approximately 20 days; 10 days for any money order or cashier's check.
2. AXN will contact the customer upon receipt of the RMA Request Form, and will issue an RMA number if the RMA Request Form is completed and delivered as requested.

3. Please take or ship RMA product to AXN or any AXN authorized service center with RMA number clearly and marked on the outside of the packing. All RMA products should be returned in secured packaging, preferably in the original package, with the complete set of accessories. We recommend that you insure the package in case of loss or damage during shipping.
4. Upon receiving the RMA product, if the correct RMA number is clearly marked on the packaging, and if the repair payment is pre-paid or is enclosed with the package, depending on the condition of the defects, AXN will repair or replace all RMA products, and ship the product back to the customer.
5. For additional information or the name of the nearest AXN service center, please contact your AXN dealer or AXN Customer Service.

Before contacting us:

In many cases, your produce may not need repair. Before contacting us, please consult the trouble shooting section in your user's guide or AXN'S FAQ webs page to see if you can easily remedy the problem yourself.

AXN technical support services:

During the period of product warranty, we support your basic configuration, setup and troubleshooting questions; and when necessary, we will provide you with all the instructions on how to return your product for repair.

For customer service and support inquiries, please call 1-888-210-9483 or e-mail us at customerservice@axionzone.com.

REPAIR OR REPLACEMENT AS PROVIDED UNDER THIS WARRANTY IS THE EXCLUSIVE REMEDY OF THE CONSUMER. AXN SHALL NOT BE LIABLE FOR ANY INCIDENTAL OR CONSEQUENTIAL DAMAGES FOR BREACH OF ANY EXPRESS OR IMPLIED WARRANTY ON THIS PRODUCT. EXCEPT TO THE EXTENT PROHIBITED BY APPLICABLE LAW, ANY IMPLIED WARRANTY OF MERCHANTABILITY OR FITNESS DURATION TO THE DURATION OF THIS WARRANTY.

Some states do not allow the exclusion or limitation of incidental or consequential damages, or allow limitations on how long an implied warranty lasts, so the above limitations or exclusion may not apply to you. This warranty gives you specific legal rights, and you may also have other rights, which vary from state to state.